

Foundation Stone



TECHNICAL SPECIFICATIONS

Country of Origin:	Australia	Colours:	8 Standard
Yarn:	100% Statron Plus® Solution Dyed Nylon	Surface Texture:	Textured Loop Pile
Gauge:	47/10cm (1/12th Gauge)	Total Product Thickness:	6 (+/- 1.0)mm
Pile Height:	3.5 (+/- 1.0)mm	Pile Weight:	746.00g/m ² (22oz)
Backing:	Enviro Bac®	Size:	500mm x 500mm
Installation Method:	Direct Stick	Type:	Carpet Tiles and Planks
Units Per Box:	16.00	m ² per box:	4
m ² per pallet:	144	Pattern Repeat:	Not Applicable
Quickship AU:	Cooling Shale, Active Red, Animated Orange, Warming Charcoal, Intellectual Yellow		

PERFORMANCE

Anti-Static:	(AATCC 134) <3.5KV at 21°C & 20% Relative Humidity
Flammability:	CRF 8.0kW/m ² (Direct Stick)~
Light Reflectance:	Available on Request
Stain Resistance:	Stain Warden®
Biocontaminant Control:	Bioshield® Antimicrobial Control
ACCS Rating:	Contract Extra Heavy Duty - 4 Star
Smoke Value:	410% minutes (Direct Stick)
Recommended Adhesive:	Refer to our GH Commercial Adhesive Guide www.ghcommercial.com

SUSTAINABILITY

PVC Minimisation:	PVC Free
Indoor Air Quality:	Green Building Council compliant for VOC emission rate limits
Product Transparency:	Declare Red List Free
Green Star:	Environmental Certification Scheme (ECS) Level 4+ . Achieves 12+ Points meeting Best Practice Requirements - Certificate #21254
Accreditation:	Manufactured under a quality, environmental and health and safety system certified and complying with ISO 9001, ISO 14001 and ISO 45001 by accredited certification bodies.

AVAILABILITY

Size Options:	250mm x 1000mm carpet plank
Backing Options:	Enviro Bac Plus® cushion backing
Other Options:	Glueless Installation Method: FlexLok®

Foundation Stone



Australian Made



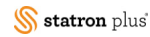
PVC Free



ISO 14001 Environment Management System



ISO 9001 Quality Management System



Statron Plus® SDN



Designer Jet Carpet Tiles & Planks on Enviro Bac and Enviro Bac Plus



Contract Extra Heavy Duty - 4 Star



Declare® Red List Free



Textured Loop Pile



Mid Range

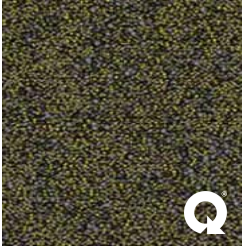


ECS Level 4+

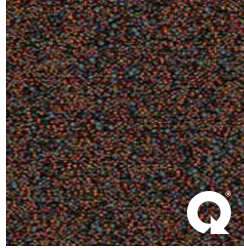


SDN Carpet Tiles with Enviro Bac®

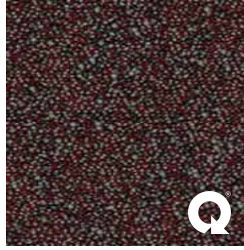
Foundation Stone



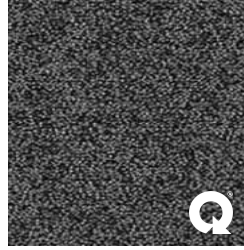
380
Intellectual Yellow



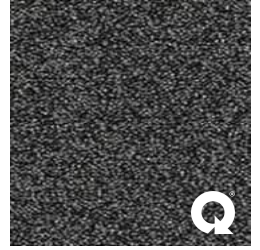
670
Animated Orange



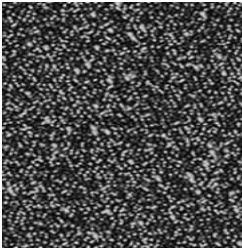
680
Active Red



770
Cooling Shale



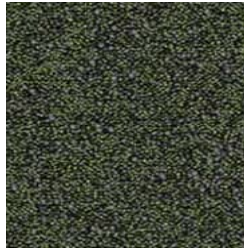
780
Warming Charcoal



790
Neutral Grey



870
Reflective Blue



950
Tranquil Green

Foundation Stone



Specifications and colourations are subject to manufacturing tolerances. As part of the GH Commercial continuous improvement program, GH Commercial reserves the right to change the specifications of or delete colours of this product without notice. While all care is taken, product images may vary in colour due to possible printing process variations. Images do not seek to duplicate the exact visual appearance, but serve merely as a guide or point of reference.

All GH Commercial carpet tiles and planks must be installed in accordance with AS2455 Parts 1 & 2 (latest version) and the GH Commercial Carpet Tile/Plank Installation Instructions. Chair pads are recommended under office chairs with roller castors to preserve appearance retention, act as a deterrent toward delamination and to prevent premature or accelerated wear. Walk-off tiles from the Tuff Stuff II Collection are recommended at entryways to reduce soiling. ~Test results and certificates are available on request.

*Guarantee is in addition to any rights consumers may have under Australian consumer laws. Terms and conditions apply - for full information in respect to the scope of the guarantee please contact your GH Commercial Account Manager or our Head Office.